

the year that was 2015 .....

### the flinders project

building works were finally completed in mid 2015 by lyon constructions, and the client enjoyed their first summer in the new house. the external spotted gum timber lining boards will be allowed to fade and sit a little more gently with the stacked stone walls and chimneys, and the vines being trained over the pergola will of course add another layer of detail over time.

for this project we were responsible for the design (architectural and interiors), construction services and furniture selection & procurement.



entry gates



garden seat and water feature



north east corner



west entry



bathroom vanity



kitchen

## also close to the beach in mornington.....

the building works for this project were also started & completed in 2015 by lyon constructions – and included new decks to the north and south, and the refurbishment of the main bedroom suite. we provided the concept design, saltwater drafting looked after the building permit documentation, and the client administered the building contract directly.



north facing deck



ensuite



main bedroom looking east



main bedroom looking west

## and at frankston south.....

our clients had purchased one of the few remaining 'bush' blocks with direct beach access – the sloping site provides wonderful views through the trees and over port phillip bay to the city skyscrapers in the distance. it was an amazing opportunity for us to stretch our architectural design skills. thanks to greg stephens for his invaluable assistance building the concept design model.



view from the north west



south west corner



north elevation



west elevation (looking up the hill)

## from the peninsula to the north side of town - thomastown offices for kinross farm pty ltd

the recent growth of kinross farm pty ltd, with farms spread all over victoria, saw the need for a more centralised head office so the move was made from kinglake to thomastown. we were responsible for the design and documentation, and assisted in the selection of loose furniture.

the fitout was constructed by macerlain building services. office furniture was supplied by schiavello, UCI, jordan and temperature, and staff room and balcony furniture by tait. window furnishings by pace interiors.



balcony



office



workstations

## **farmhouse at kinross farm pty ltd kinglake**

the original house on the kinglake farm was built about 50 years ago, and after several renovations and additions over the years, required a complete overhaul to accommodate the farm manager and his family. the scope of works includes a new roof, removal of a few walls and relocation of a couple of windows, new fitouts to the bathrooms, kitchen and laundry, and new floor and wall finishes generally. building works commenced aug/sept last year and completion is expected before easter.



existing south entry august 2015



new roof structure to the extended south terrace oct 2015



new roof sheeting to the south terrace dec 2015

## **daisy hill cottage**

this existing cottage was recently renovated to provide accommodation for guests. we assisted the client with selection of colours/finishes for the new works, in keeping with the existing classic country cottage.



**highrise apartment A in mirvac's array tower, docklands**

this apartment was completed mid last year but the client delayed moving in until the end of the year. we provided design advice on the colours & finishes, and some design detailing.



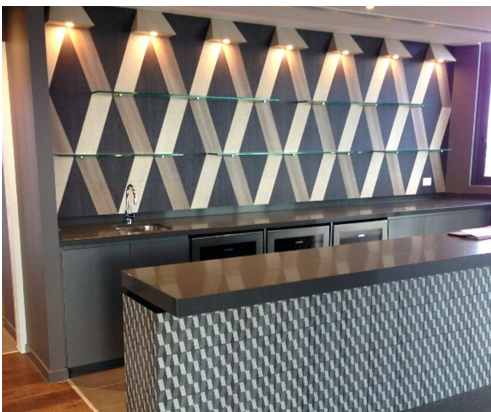
ensuite



walk-in robe with lighting



kitchen



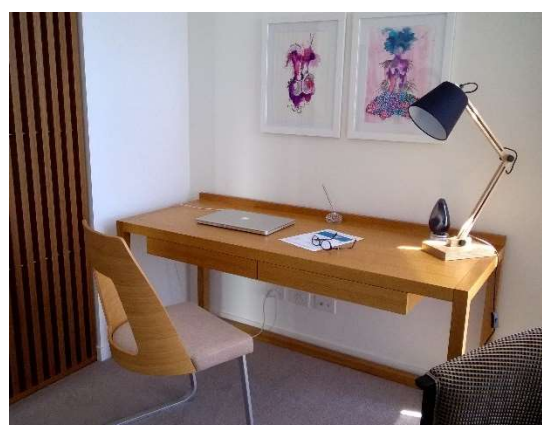
bar

**highrise apartment B in mirvac's array tower, docklands**

this apartment was also completed mid last year using the developer's suggested colours and finishes. we assisted the client with the furniture selection and procurement. furniture was supplied by jordan, temperature, hub, cult, misura, mondoluce and sealy. rugs by loom and lift lobby carpet by supertuft.



kitchen/dining with low seating area



study area



main bedroom



family room

with the completion of a number of large projects last year, and with the frankston south project on hold, we are having a slow gentle start to the new year. even so, are currently working on the concept design for a kitchen refurbishment for a st.kilda residence, and are advising clients from mansfield on the colours & finishes for a new house they are building. we are also talking to a client, with whom we have previously worked, regarding the interiors of new consulting rooms in a beautiful victorian villa in armadale, and have recently prepared proposals for refurbishment projects in brighton and werribee.

best wishes for 2016!  
anne-marie