

anne-marie *rush* interior architecture

november 2012 newsletter

the previous 12 months has seen the completion and commencement of some interesting projects. we have been delighted to reconnect with some clients for whom we have previously worked; for both the partners of trilec australia (for whom we did concept design for the new trilecoffices in 2005), we have prepared design advice for their respective homes up at mt. macedon and in strathmore. we have also been involved in additional works on the st.vincent's place residence (clients for whom we have worked since 2004), and again at the academic centre at newman & st.mary's college.

fitout for C3 business solutions at 459 little collins street

thanks to kate hart who was too busy to do this job and recommended our services to nigel hobart, principal at rothelowman, who in turn introduced us to C3 business solutions.

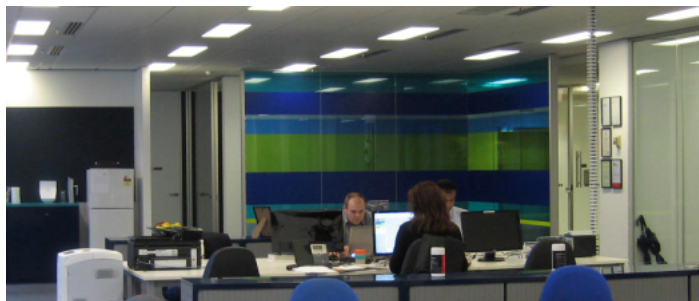
C3 business solutions is a company specialising in information management and business intelligence. they were looking for new premises that would accommodate their predicted growth and wanted the fitout planning and aesthetic to reinforce their company philosophy and values, all with a relatively tight budget and time frame with which to work. we rose to the challenge and provided design services, and appointed trevor spencer of spencer & cartwright as head contractor, completing the project earlier this year.



reception



reception



open office area

flinders residence

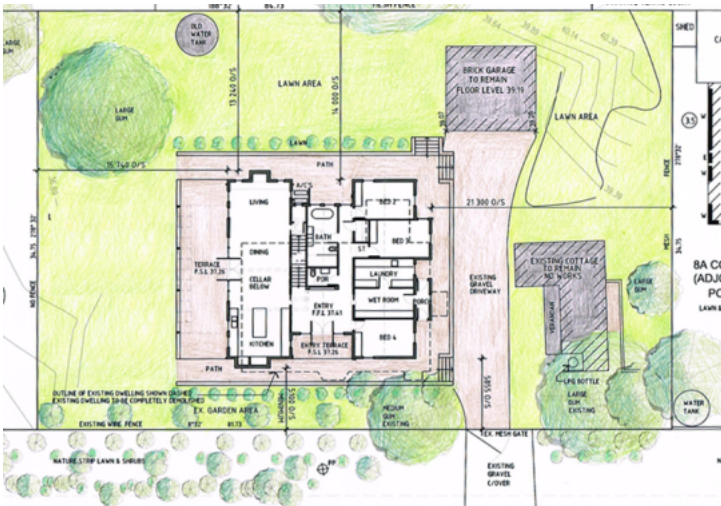
a couple of years ago we were invited to look at this project with a view to retaining the existing main house on the site and refurbishing it as it had been dramatically and unsympathetically altered over the years. after further consideration it was decided to demolish it and start again, so we have designed a new dwelling which sits sympathetically with the existing corrugated iron cottage on the site. we are currently awaiting planning permission so that we can develop the design and start construction documentation.



working model - looking towards the south west



working model - looking towards the north east



part site plan showing the proposed new dwelling in relation to the existing cottage and garage

hillcrest ave residence

we had collaborated with this client, on the design of alterations and additions to the existing californian bungalow since 2008, so it was with great pleasure that we viewed the completed works, which were managed by the client, mid this year. the builder was matt bright - you can check out some additional photos of the finished project on his website, www.mjbrightbuilders.com.au



the original proposed finishes selection



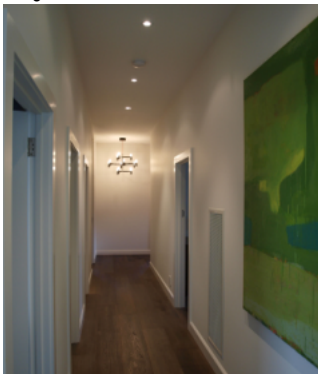
living room



kitchen



pantry



hallway



kid's bathroom



ensuite

anne-marie *rush* interior architecture

november 2012 newsletter

.....and

we are also currently involved with the selection and procurement of artworks for a medical practice in malvem, assisting su jamison design with the furniture procurement for an apartment in mornington, the design and documentation of alterations to a house in hawthorn and the concept design for refurbishment of parts of the tenix offices at 277 william street.

the office will be relocating to 96 st.kilda road, st.kilda (ph 03 9537 2717) and sharing the ground floor with phil hull's art studio - we look forward to seeing you there in january 2013!

best wishes
anne-marie