

BATHROOM

no. 8

GRAPHIC  
COLLECTION


# HERITAGE HAVEN

TIME-HONOURED FINISHES ENSURE A NEWLY BUILT ENSUITE  
HAS COOL COUNTRY STYLE WITH NO LACK OF COMFORT

WORDS ANNETTE DASEY STYLING WENDY BANNISTER PHOTOGRAPHY SHANIA SHEGEDYN

*bath* When it came to picking out a suitable bath for homeowners Jo and Jack, Melbourne interior architect Anne-Marie Rush drew on her experience, opting for a Kaldewei 'Vaio Duo' 1800mm oval bath from Reece. "I've used Kaldewei baths before, because of their quality and aesthetic," she says. "It also sat well with the vanity basin." This house was a new build so there were no restrictions on the location of the bath and plumbing, which allowed Anne-Marie to set the bath out from the perimeter wall, to aid with cleaning. A Hydrotherm 'Milan' electric heated towel ladder from Reece adds extra luxury, while a custom stool with a stainless steel frame by Markforce Australia provides a resting spot for bath-time essentials.





*vanity* Created by Kent Joinery, the four-drawer vanity is made of spotted gum. It hosts a Catalano basin (for similar, try their 'C3 CX55' basin) and a Myhill wall-mounted hard-wired magnifying mirror, both from Rogerseller. "I love this timber," says homeowner Jo. "It's mellow and has been oiled throughout the bathroom, so it has a depth of colour that sits beautifully against the wall tiles." Jo and Jack wanted a natural touch, so opted for honed Calacatta marble on the benchtop - supplied by CDK Stone and made by Creative Stone. >



**H**igh on the list of priorities for Melbourne couple Jo and Jack while building their Mornington Peninsula holiday home was an ensuite in which to unwind. “The ensuite is meant to feel like being in a cocoon,” says interior architect Anne-Marie Rush, who chose three Patricia Urquiola vitrified ceramic tiles from Academy Tiles – a plain tile for the upper wall and two patterned tiles for a dado and its border – to help fulfil the brief. “The room is darker and moodier than the rest of the house, which is very light, and the tiles’ patterns make it more intimate.”

The homeowners wanted their holiday home to have a lived-in look, so Anne-Marie also suggested non-uniform porcelain floor tiles. “They had just been to Italy and were inspired by the use of natural finishes,” she explains. “Because of the change in colour throughout the floor tiles, they look like they’ve been there forever, even though it’s a new build.”

Jo intends the house to be the couple’s full-time home when their three children fly the nest, but for the moment, the ensuite satisfies their current desire for a haven. “It’s really peaceful to sit in the bath and look over the treetops in the distance,” she says.



**vanity station** Jo and Jack are able to get ready each morning without disturbing each other, as a vanity station (above & top), also created in spotted gum by Kent Joinery, is opposite the main vanity. “It’s fantastic,” says Jo. “All my make-up goes in the drawer and is out of the way next to the shower so I’m not competing with the person at the sink.”

**tiles** Wall-cladding boards to dado height, common in country cottages, deliver traditional style elsewhere in this holiday home. Interior architect Anne-Marie Rush carried this theme into the ensuite with three tiles from Spanish designer Patricia Urquiola’s collaboration with Mutina, available at Academy Tiles (above & top). One design from the ‘Azulej’ range, in Estrella Nero, swathes the lower wall. A second design in complementary Flores Nero forms the dado border, and the upper half has been left plain with a Nero tile. “The designs are based on historical patterns but have a contemporary twist,” says Anne-Marie. Jo gave the trio an immediate tick of approval. “I especially love the border of tiles in the centre,” she says. “It offers a different textural element.”

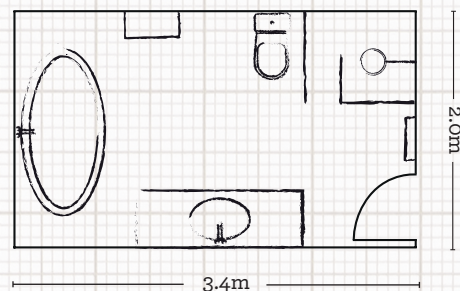


**shower** The Perrin & Rowe fittings from The English Tapware Company used in this bathroom are a nod to the past. “We were looking at tapware that was classical in inspiration but had a modern twist,” says Anne-Marie. There is a functional handheld spray for easy cleaning along with a fixed rose, and in the rest of this space, the floor tiles are Mirage ‘Heritage Ardenne’ 600mm x 600mm porcelain in Natural from Classic Ceramics.

### >designer tip<

*If there isn’t space in your bathroom for tandem basins – or if they don’t work visually – installing a vanity station elsewhere in the room is a good option. This can be as simple as a mirror and shelves (although a drawer, like in Jo and Jack’s ensuite, left, is a brilliant idea), making it easier for two people to use the room at the same time.*

### BATHROOM LAYOUT



INTERIOR ARCHITECT: Anne-Marie Rush, (03) 9537 2717,  
0438 534 305, amrush.com.au. Stockists, page 252