

anne-marie *rush* interior architecture

december 2009 newsletter

we just wanted to share with you some of the great projects we have been involved with this year, our tenth year in business.....

fordholm rd residence

we started the first stage of refurbishment works on this family home back in 2004 and earlier this year completed the second stage which involved converting unused roof space into an attic study and bedroom. we are now working on the design and documentation of stage 3 which will include a new kitchen, laundry, library, living/dining room and rumpus room.



the attic windows



study



bedroom

eaglemont residence

when we started working on this project in mid 2007 the builders were on site and the structure was almost complete so we had a lot of catching up to do. designed by architect vladimir chernov this large contemporary house acknowledges the earlier buildings in the area by walter burley griffin. the detailing of the interiors also reflects these influences and seeks to give a more intimate experience to the large spaces.



the stair



dining



kitchen



rumpus room



ensuite



outdoor living

anne-marie *rush* interior architecture

december 2009 newsletter

the allan and maria myers academic centre donor board

nestled in between walter burley griffin's newman college and st.mary's college, the academic centre was designed by architect peter corrigan. the building of the centre was funded by numerous donors which are acknowledged on the board located in the centre's entry foyer. although a very small project it was one of this years highlights, giving us the opportunity to grapple with the differences in the design approach of corrigan and griffin.



roslyn street residence

some built-in joinery and new furniture helped finish off the rumpus room, children's bedrooms and mum's study.....



study



study



rumpus room



boy's bedroom



girls bedroom

anne-marie *rush* interior architecture

december 2009 newsletter

brighton residence

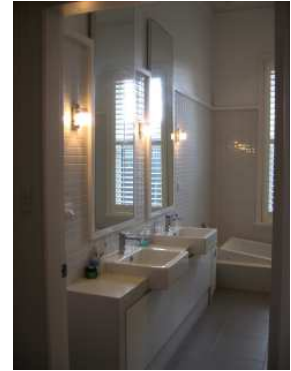
we had previously worked with these clients on a very contemporary house designed by max architects so their relocation to a victorian villa was quite a change. the interior detailing still reflects a warm contemporary aesthetic but takes into account the differing proportions of the victorian era.



living/study



living/study



bathroom

concept design for a residential development in bryon bay and houses in richmond, hawthorn and flinders have also kept us busy.

we are looking forward to the new challenges that 2010 will bring, amongst which will be moving the office to bay street, port melbourne at the end of april. we will be in touch to let you know our new contact details but the email address and mobile number will stay the same.

in the meantime, the office at 118 queen street will be closed from thursday december 24th 2009 and will open again on monday january 25th 2010. we look forward to hearing from you then.

happy christmas and best wishes for the new year.
anne-marie